



**2022** **TRANSIT CONNECT**<sup>®</sup>  
PASSENGER WAGON | CARGO VAN

# PICK YOUR NEW PARTNER.

Venturing into a new business or racking up road trips takes more than just a reliable vehicle. You need a partner that's smart, thinks ahead, and moves forward. The 2022 Built Ford Tough® Transit Connect® lineup can help you make things happen. These versatile, nimble Passenger Wagons and Cargo Vans propel your passions with a choice of I-4 engines. The standard 2.0L GDI offers EcoMode and EcoCoach technologies designed to help you drive smart, while the available 2.5L iVCT offers you alternative fuel options. Transit Connect Passenger Wagon offers the most available seating in its class,<sup>1</sup> up to 7 individuals. And room for items up to 117.5" long<sup>2</sup> in Cargo Van LWB that's also best-in-class. No wonder entrepreneurs, active families, and savvy individuals like you seal the deal with Transit Connect – America's best-selling small van.<sup>3</sup>

**CARGO VAN XLT LWB.** Frozen White. Available and aftermarket upfit equipment.

**PASSENGER WAGON TITANIUM LWB.** Sedona Orange Metallic. Ford Licensed Accessories, and other available and aftermarket upfit equipment.

Vehicle imagery throughout this brochure may have been created digitally and includes available and aftermarket upfit equipment. **1.** Class is Small Vans. **2.** Cargo Van LWB (shown) with front-passenger seat folded down. 101.7" max. length on Cargo Van SWB (not shown). **3.** Based on total U.S. reported sales (2020 CY).

**Important information regarding availability.** You may have heard the auto industry is experiencing a combination of high demand and global supply-chain constraints. This means our ability to build new vehicles with some features may not be available. We're doing everything we can to innovate our way through this and meet the demand for new Ford vehicles. We will continue to provide updates as we have them or you can contact your Ford Dealer for additional assistance.



BUILT *Ford* PROUD



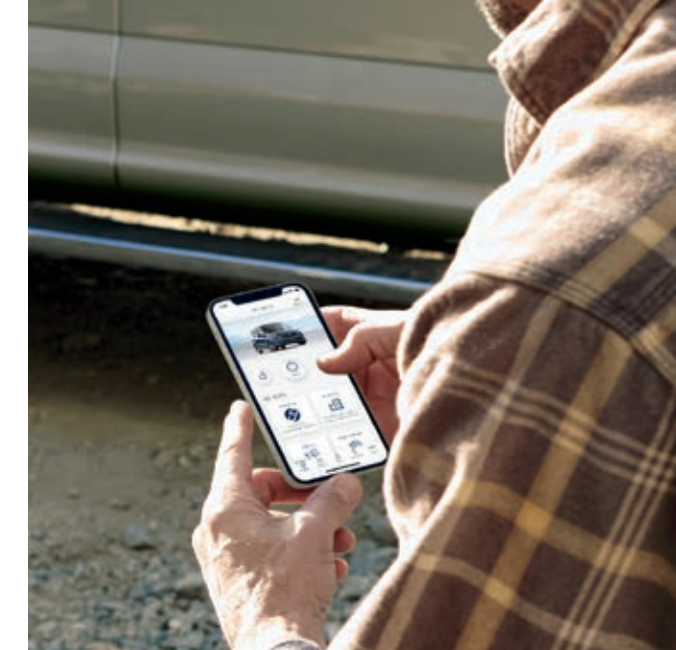
# CRUISE AND CONNECT COMFORT AND TECHNOLOGY.

Dual-zone electronic automatic temperature control, heated 1st-row seats and power-folding, heated sideview mirrors are available to help you stay comfortably in control. Transit Connect® vans offer class-exclusive available wireless phone charging to keep your compatible phone topped up,<sup>1</sup> while available MyKey® technology can help you encourage responsible driving by programming reminders to obey speed limits, keep the audio volume low and much more.

Start, stop, lock and unlock your Transit Connect vehicle from your smartphone with FordPass™ Connect and the FordPass App.<sup>2</sup> Connect up to 10 devices at once – inside the vehicle or up to 50' away – with 4G LTE Wi-Fi hotspot capability<sup>3</sup>



SCAN TO LEARN MORE  
or visit [Ford.com/SYNC](http://Ford.com/SYNC)  
Data rates may apply.



## SYNC® 3<sup>4</sup>

- Sleek, user-friendly interface
- Fast, smart and simple connectivity
- 6.5" LCD touchscreen
- 2 smart-charging USB ports
- Apple CarPlay® compatibility<sup>5</sup>
- Android Auto™ compatibility<sup>5</sup>
- Available SiriusXM® with 3-month All Access trial subscription<sup>6</sup>
- Available Voice-Activated Touchscreen Navigation System<sup>7</sup>
- Standard on XLT/TITANIUM, optional on XL

**CARGO VAN XLT.** Ebony seating. Driver seat manual lumbar. Fold-flat front-passenger seat back. Cruise control. SYNC 3. Available equipment.

Don't drive while distracted or while using handheld devices. Use voice-operated systems when possible.

**1.** Qi wireless charging may not be compatible with all mobile phones. **2.** FordPass Connect, the FordPass App, and complimentary Connected Service are required for remote features (see FordPass Terms for details). Connected service and features depend on compatible AT&T network availability. Evolving technology/cellular networks/vehicle capability may limit functionality and prevent operation of connected features. Connected service excludes Wi-Fi hotspot. **3.** Wi-Fi hotspot includes complimentary wireless data trial that begins upon AT&T activation and expires at the end of 3 months or when 3GB of data is used, whichever comes first. To activate, go to [www.att.com/ford](http://www.att.com/ford). **4.** Some features may be locked out while the vehicle is in gear. Not all features are compatible with all phones. **5.** Requires phone with active data service and compatible software. SYNC 3 does not control 3rd-party products while in use. 3rd parties are solely responsible for their respective functionality. **6.** All SiriusXM services require a subscription, each sold separately by SiriusXM after the trial period. Service will automatically stop at the end of your trial unless a subscription is purchased. See the SiriusXM Customer Agreement at [www.siriusxm.com](http://www.siriusxm.com) for complete terms. Some services and features are subject to device capabilities and location availability. All fees, content and features are subject to change. **7.** Availability varies by model and trim. See Specifications in this brochure for details.



# TAKE YOUR SEATS.

When it comes to transporting people and their gear, the Transit Connect® Passenger Wagon makes versatility a virtue. Different available seating and cargo layouts help you configure Transit Connect to your needs. Plus, we've made available plenty of features to help smooth the journey for driver and passengers alike.

## A. 3 DOORS OR 4

Choose a rear liftgate or the available 180° swing-out rear cargo doors, either of which combines with the dual sliding side doors and a low step-in height to offer easy access to all.

## B. UPHOLSTERY CHOICES

Ebony vinyl, available Palazzo Grey leather-trimmed, or available cloth seating in either shade.

## C. SEAT 6 OR 7

Standard 2nd-row bucket seats provide room for 6 with a convenient pass-through to the 3rd row. An available 60/40 split bench seat (shown) can replace the 2nd-row buckets, creating a 7-seat cabin.

## D. EXTRAS UP FRONT

Available 6-way power driver and 4-way manual front-passenger heated seats with lumbar support.

## E. POWER ALL AROUND

Keep lots of devices charged with the 110V/150W AC power outlet, 2 available smart-charging USB ports, and three 12V powerpoints inside Transit Connect Passenger Wagon.



Seat up to 5 (Available FLEET only)



Seat up to 6 (Standard)



Seat up to 7 (Available)

**PASSENGER WAGON TITANIUM LWB.** Palazzo Grey seating. Heated, 6-way power driver and 4-way manual front-passenger seats. Leather-wrapped steering wheel and shifter knob. SYNC® 3 with Navigation System. Available equipment.



PASSENGER WAGON TITANIUM LWB. Blue Metallic. Available equipment. Properly secure all cargo.



**OPEN IT UP**  
 Fold-down seats, dual sliding side doors, plus a rear liftgate (or available 180° swing-out rear doors) let you easily access the cargo area.

1. Cargo and load capacity limited by weight and weight distribution.

# SWITCH IT UP.

Plans change – and the Transit Connect® Passenger Wagon adapts to help you keep pace. Thoughtful, ingenious features assist you in ways you didn't know you needed until we created them. It's another way this Built Ford Tough® van is on the job and in your corner every step of the way.

**A. FULL-WIDTH OVERHEAD FRONT STORAGE SHELF**  
 Helps keep you organized and informed with an available sunglasses holder and observation mirror.

**B. AVAILABLE PANORAMIC FIXED-GLASS VISTA ROOF®**  
 Helps brighten every ride.

**C. SPLIT THE DIFFERENCE**  
 Take advantage of the split, fold-flat 2nd- and 3rd-row seats to properly secure gear alongside your passengers whenever you like.

**D. EASY TO FOLD**  
 Need to load supplies for your latest project, or bulky sports equipment for your team? It's easy to fold any – or all – of the rear seats flat.

**PASSENGER WAGON MAX. CARGO SPACE<sup>1</sup>**

43.3" TALL	106.0 CU. FT. BEHIND 1ST ROW
47.0" WIDE	60.1 CU. FT. BEHIND 2ND ROW
	24.9 CU. FT. BEHIND 3RD ROW with seats folded and in most forward position



# ROLL WITH CONFIDENCE.

Changing lanes. Backing up. Finding the fastest route to your destination. Our extensive, well-rounded collection of standard and available Ford Co-Pilot360™ Technology features can help you with these everyday situations and so many more. Our advanced technologies are about supplementing your driving skills.<sup>1</sup> Helping you feel confidently in command on the road. With the most available Driver-Assist Technologies in its class, Transit Connect® is clearly a smart move.

## FORD CO-PILOT360™ TECHNOLOGY

### STANDARD FEATURES

- Hill Start Assist
- Class-exclusive Pre-Collision Assist with Automatic Emergency Braking
- Rain-Sensing Windshield Wipers
- Rear View Camera
- Side-Wind Stabilization

### AVAILABLE FEATURES

- Auto High-Beam Headlamps
- Class-exclusive BLIS® (Blind Spot Information System) with Cross-Traffic Alert
- Class-exclusive Adaptive Cruise Control and Lane-Keeping System
- Class-exclusive Enhanced Active Park Assist<sup>2</sup>
- Voice-Activated Touchscreen Navigation System

**CARGO VAN XLT LWB.** Frozen White. Black, power, heated sideview mirrors with power folding. Body-color front bumper and rear bumper end caps. Halogen fog lamps. Available equipment.

**1.** Driver-assist features are supplemental and do not replace the driver's attention, judgment and need to control the vehicle. It does not replace safe driving. See owner's manual for details and limitations. **2.** Passenger Wagon only.



### CLASS-EXCLUSIVE ADAPTIVE CRUISE CONTROL

When activated, available Adaptive Cruise Control automatically keeps a constant speed and a comfortable distance from the vehicle ahead, without the driver having to work the accelerator or brake pedals!<sup>1</sup> It can also resume acceleration automatically.

SCAN TO LEARN MORE  
or visit [Ford.com/Technology](https://ford.com/Technology)  
*Data rates may apply.*





# GET TO WORK.

As America's best-selling small van,<sup>1</sup> Transit Connect® Cargo Van continues to impress hardworking entrepreneurs with its comfortable interior, and maneuverability that makes it ideal for use in tight spaces and urban areas. Spec it your way with a choice of Short Wheelbase (SWB) or Long (LWB). Each is Built Ford Tough® with durable vinyl- or available cloth-trimmed seats, plus plenty of options and aftermarket upfits. Add available glass to the dual sliding side doors and 180° swing-out rear cargo doors if you'd like. Or opt for the available rear liftgate. Backed by the knowledge we've gained over more than 40 years of building America's best-selling commercial vans,<sup>2</sup> Transit Connect Cargo Vans are designed to help you concentrate on the work of growing your business.

**CARGO VAN XLT LWB.** Frozen White. Black, power, heated sideview mirrors with power folding. Body-color front bumper and rear bumper end caps. Halogen fog lamps. Available and aftermarket upfit equipment.

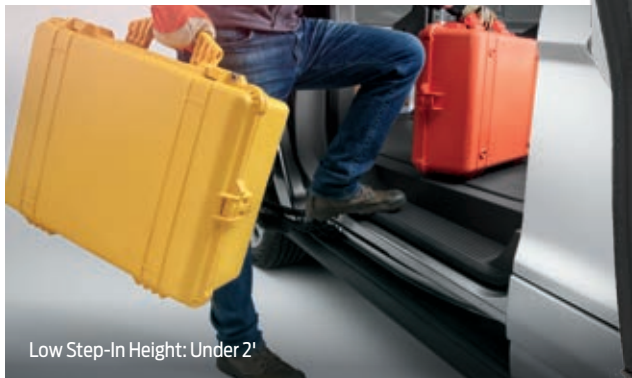
**1.** Based on total U.S. reported sales (2020 CY). **2.** Based on the total U.S. reported sales (1979-2020 CY). Includes Ford E-Series®, formerly called Econoline, van and chassis; Club Wagon; Transit Connect cargo van and passenger wagon; Transit® cargo van, passenger van and chassis.



Available Composite Bulkhead Partitions



Fold-Flat Passenger Seat Back



Low Step-In Height: Under 2'



# VALUE VERSATILITY.

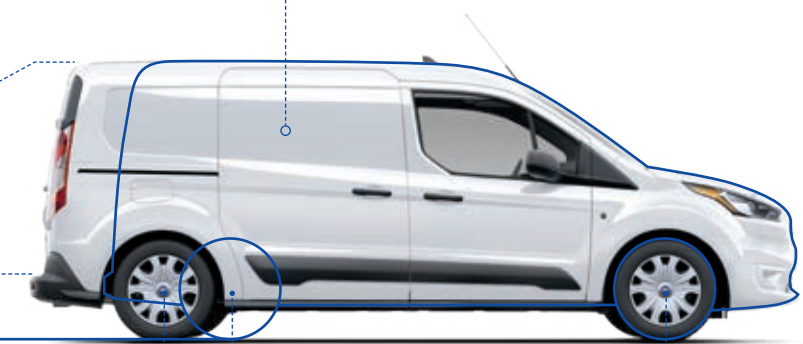
Whichever wheelbase you choose (SWB or LWB), Transit Connect® Cargo Vans offer plenty of versatility. Every Cargo Van features convenient cargo tie-down hooks, near-vertical walls, and a durable, washable vinyl floor covering. LWB models let you fold the passenger seat down for up to 145.8 cu. ft. of cargo space.<sup>1</sup> You can also fit items up to 4' wide, 4' tall, or 9' long in LWB models.<sup>2</sup> With SWB models, you can enjoy a nimble 38.3' curb-to-curb turning diameter. Take your business wherever it takes you in the Transit Connect.

ADVERTISE  
ON THE  
DUAL SLIDING  
SIDE DOORS

ROOF HEIGHT  
72.0"

LENGTH  
LWB 190.0"  
SWB 174.2"

STEP-IN HEIGHT  
UNDER 2'



LWB 120.6"

SWB 104.8"

**CARGO VAN XLT LWB.** Frozen White. Ebony seating. SYNC® 3. Wireless charging pad. Carpeted front and vinyl rear flooring. Dual sliding side doors. 180° swing-out rear cargo doors with available fixed glass and wipers. Rear cargo area light. Available equipment.

**1.** Cargo and load capacities limited by weight and weight distribution. **2.** Cargo length: 117.5" Cargo Van LWB (shown) with passenger seat folded down (101.7" SWB not shown).



# FOCUS ON UPFITS.

What you do – and how you do it – is unique to you. Which is why we offer a full lineup of Transit Connect® Passenger Wagons and Cargo Vans with modern practicality and exceptional versatility to suit your business and personal needs. Built Ford Tough® straight from the factory, you can equip your Transit Connect to do even more with upfits designed for your specific trade or requirements. We work with trusted brands to offer you a full line of available Racks & Bins, Adaptive Gear, Custom Graphics and so much more.

Explore your options at [fordupfits.com](http://fordupfits.com)



PLUMBING



GENERAL CONTRACTING



ELECTRICAL



HEATING AND COOLING



CATERING



ACCESSIBILITY



**CARGO VAN XLT LWB.**  
Silver. Available and aftermarket upfit equipment.



1. Maximum payload and towing capabilities are for properly equipped base vehicles with required equipment and a 150-lb. driver and vary based on cargo, vehicle configuration, accessories and number of passengers. May require available options. Restrictions apply. See label on door jamb for carrying capacity of a specific vehicle. Cargo and load capacity limited by weight and weight distribution. See your dealer for details. 2. Requires available Trailer Tow Package. 3. FordPass Connect, the FordPass App, and complimentary Connected Service are required for remote features (see FordPass Terms for details). Connected service and features depend on compatible AT&T network availability. Evolving technology/cellular networks/vehicle capability may limit functionality and prevent operation of connected features. Connected service excludes Wi-Fi hotspot. 4. Wi-Fi hotspot includes complimentary wireless data trial that begins upon AT&T activation and expires at the end of 3 months or when 3GB of data is used, whichever comes first. To activate, go to [www.att.com/ford](http://www.att.com/ford). 5. Always wear your safety belt, secure children in the rear seat, and follow airbag warning label instructions.

## DIMENSIONS

	Passenger Wagon LWB	Cargo Van SWB	LWB
<b>Exterior (in.)</b>			
Wheelbase	120.6	104.8	120.6
Length	190.0	174.2	190.0
Height	71.6	72.0	72.0
Width – Excluding mirrors	72.2	72.2	72.2
Width – Including mirrors	84.1	84.1	84.1
Width – Mirrors folded	77.4	77.4	77.4
Track – Front	61.4	61.4	61.4
Track – Rear	61.7	61.7	61.7
Overhang – Front	34.8	34.8	34.8
Overhang – Rear	34.6	34.6	34.6
<b>Interior (in.)</b> (1st/2nd/3rd row)			
Head room	46.9/45.7/41.9	46.9/–/–	46.9/–/–
Leg room (max. 1st row)	42.3/37.6/35.0	41.5/–/–	41.5/–/–
Hip room	54.2/58.3/47.0	54.2/–/–	54.2/–/–
Shoulder room	57.6/58.5/56.3	57.6/–/–	57.6/–/–
<b>Cargo Area (in.)</b>			
Length – Front at floor behind 1st row	85.6	71.8	<b>87.6</b>
Length – Front at beltline behind 1st row	76.5	61.3	77.0
Length with front-passenger seat folded	–	101.7	<b>117.5</b>
Load floor height (curb)	22.4	23.0	22.9
Side cargo door opening height	37.6	44.4	44.4
Side cargo door opening width	32.8	24.2	32.8
Rear cargo door opening height	45.4	47.3	45.5
Rear cargo door opening width	47.0	49.2	49.2
Width between wheelhouses	47.0	48.7	48.7
Height (max.)	43.3	49.7	49.8
<b>Capacities<sup>1</sup></b>			
Passenger volume (cu. ft.)	167.1	63.2	63.2
Max. towing (lbs.) <sup>2</sup>	2,000	2,000	2,000
Max. GVWR (lbs.)	5,420	5,130	5,302
Max. payload (lbs.)	1,435	1,545	1,585
<b>Cargo Volume (cu. ft.)</b>			
Behind 1st row	106.0	104.8	127.4
Behind 1st row with front-passenger seat folded	–	123.2	145.8
Behind 2nd row	60.1	–	–
Behind 3rd row (min./max.)	16.3/24.9	–	–

## STANDARD FEATURES

### MECHANICAL

15.8-gallon fuel tank  
80-amp-hr heavy-duty battery  
EcoMode and EcoCoach (n/a with 2.5L iVCT I-4 engine)  
Electric power-assisted steering  
Front-wheel drive (FWD)  
Full-size spare wheel and tire  
Suspension – Front: independent MacPherson-strut; rear: twist-beam  
Torque Vectoring Control

### FORD CO-PILOT360™ TECHNOLOGY

Hill Start Assist  
Pre-Collision Assist with Automatic Emergency Braking (AEB) including Pedestrian Detection and Forward Collision Warning  
Rain-Sensing Windshield Wipers  
Rear View Camera  
Side-Wind Stabilization

### INTERIOR

FordPass™ Connect<sup>3</sup> with 4G LTE Wi-Fi hotspot capability<sup>4</sup>  
Overhead front storage shelf with grab handles  
Power door locks  
Tilt/telescoping steering column

### EXTERIOR

Daytime running lamps – Configurable  
Easy Fuel<sup>®</sup> capless fuel filler  
Sideview mirrors with integrated blind spot mirrors

### SAFETY & SECURITY

AdvanceTrac™ with RSC<sup>®</sup> (Roll Stability Control™) and Curve Control  
Driver and front-passenger front airbags<sup>5</sup>  
Front-seat side airbags<sup>5</sup>  
Individual Tire Pressure Monitoring System (excludes spare)  
Safety Canopy<sup>®</sup> side-curtain airbags<sup>5</sup>  
SecuriLock<sup>®</sup> Passive Anti-Theft System

Best-in-class configurations shown **bolded**.

LWB = Long Wheelbase SWB = Short Wheelbase Payload and towing are independent attributes and may not be achieved simultaneously.

# PASSENGER WAGON

XL	XLT	TITANIUM
S	S	S
<b>ENGINES &amp; TRANSMISSIONS</b>		
<b>2.0L GDI I-4 engine</b> with Auto Start-Stop Technology, 8-speed SelectShift® automatic transmission, 162 hp @ 6,500 rpm and 144 lb.-ft. of torque @ 4,500 rpm		
0		
<b>2.5L IVCT I-4 engine</b> with 6-speed SelectShift automatic transmission, 60-amp-hr battery, 169 hp @ 6,000 rpm and 171 lb.-ft. of torque @ 4,500 rpm (requires CNG/Propane Gaseous Engine Prep Package)		
<b>MECHANICAL</b>		
S	S	S
Heavy-duty alternator (220-amp; requires 2.0L engine)		
0	S	
Intelligent Access with push-button start <sup>1</sup>		
0	0	
Upfitter wiring harness <sup>1</sup>		
0	0	
Engine block heater		
0	0	
Flex Fuel capability (FFV; requires 2.0L engine)		
0	0	
Tire inflator and sealant kit (in place of the full-size spare)		
<b>FORD CO-PILOT360™ TECHNOLOGY</b>		
Autolamp (Automatic On/Off Headlamps)		
S	S	
Auto High-Beam Headlamps		
S	S	S
Pre-Collision Assist with Automatic Emergency Braking (AEB)		
S	S	S
Rear Parking Sensors		
S	S	S
Rear View Camera		
S	S	
Lane-Keeping Aid		
0	S	S
BLIS® (Blind Spot Information System) with Cross-Traffic Alert (includes power, heated sideview mirrors with power folding)		
0	0	0
Front Parking Sensors		
0	0	
Adaptive Cruise Control (includes Lane-Keeping System)		
		0
Enhanced Active Park Assist (includes Front Parking Sensors)		
<b>COMFORT &amp; CONVENIENCE</b>		
1st- and 2nd-row power windows with driver's one-touch-up/-down feature		
S	S	
1st- and 2nd-row power windows with one-touch-up/-down feature		
S		
Day/night rearview mirror		
S	S	
Auto-dimming rearview mirror		
S	S	S
3rd-row windows with fixed glass		
S	S	S
Cruise control		

XL	XLT	TITANIUM
S	S	S
Dual front map lights and rear overhead courtesy light		
S	S	S
Dual sliding side doors		
S	S	S
Front floor console with closeable lid, 12V powerpoints (2), 110V/150W AC power outlet and 2 cupholders		
S	S	S
Rear liftgate with fixed glass, wiper and defroster		
S	S	
Acoustic-laminate windshield		
S	S	
Compass display		
S	S	
Dual-zone electronic automatic temperature control and auxiliary 2nd-row climate controls		
S	S	
Overhead front storage shelf with grab handles, sunglasses holder and child observation mirror		
S	S	
Sun visor mirrors		
0	S	
Privacy glass (excludes 1st row)		
		S
Leather-wrapped steering wheel and shifter knob		
		S
Locking and illuminated glove box		
0		
2 additional key fobs <sup>1</sup>		
0	0	
180° swing-out rear cargo doors with fixed glass and wipers		
0	0	0
Cargo net kit (vertical; divides seat from cargo area) <sup>1</sup>		
0	0	0
Overhead aircraft-style mid-vehicle console <sup>1</sup> (n/a with panoramic fixed-glass Vista Roof® or cargo net kit)		
0	0	0
Quickclear™ electric windshield defroster; plus power, heated sideview mirrors <sup>1</sup>		
0	0	
Panoramic fixed-glass Vista Roof with power sunshade <sup>1</sup>		
0	0	
Remote Start System (includes perimeter alarm)		
<b>SEATING</b>		
S		
Vinyl-trimmed 1st row with 6-way manual driver seat with manual lumbar, and 4-way manual front-passenger seat with fold-flat back; 2nd-row fold-flat bucket seats; and 3rd-row 4-way manual fold-flat bucket seats		
S		
Cloth-trimmed 1st row with 6-way power driver seat with manual lumbar, and 4-way manual front-passenger seat with manual lumbar; 2nd-row fold-flat bucket seats; and 3rd-row 4-way manual fold-flat bucket seats		
0	S	
Leather-trimmed 1st and 2nd rows with 1st-row heated seats, 6-way power driver seat with manual lumbar, and 4-way manual front-passenger seat with manual lumbar; and vinyl-trimmed 3rd-row 4-way manual fold-flat bucket seats		
0	S	
Cloth-trimmed seating surfaces		
0	0	0
2nd-row 60/40 split, fold-flat bench seat		

XL	XLT	TITANIUM
0	S	
<b>CONNECTIVITY &amp; ENTERTAINMENT</b>		
SYNC® 3 with 6.5" LCD capacitive touchscreen, 911 Assist®, AppLink® Apple CarPlay® compatibility, Android Auto™ compatibility, 2 smart-charging USB ports, and SiriusXM® with 3-month All Access trial subscription <sup>2</sup>		
0	0	S
SYNC 3 includes equipment above plus Voice-Activated Touchscreen Navigation System (includes SiriusXM Traffic and Travel Link® with 5-year subscription <sup>2</sup> ), and Premium Audio System with 9 speakers and HD Radio™ Technology		
S		
AM/FM stereo with Bluetooth® capability, 4.2" LCD screen, 1 USB port and 4 speakers		
S	S	S
12V powerpoint in rear cargo area		
0	S	S
Wireless charging pad <sup>1</sup>		
0		
Single-CD player <sup>1</sup>		
<b>SAFETY &amp; SECURITY</b>		
0	S	S
MyKey® technology to help encourage responsible driving <sup>1</sup>		
0	0	0
Perimeter alarm <sup>1</sup>		
<b>APPEARANCE</b>		
S		
3-bar black grille and surround with black bumpers and rear bumper end caps; black door handles and bodyside moldings; and black, manual sideview mirrors with manual folding		
S	S	
5-bar black grille with chrome surround, body-color bumpers and rear bumper end caps, and body-color door handles and bodyside moldings		
S	S	
Black headlamp bezels		
	S	
Chrome headlamp bezels, front bumper and rear bumper molding		
S	S	
Headlamps – Halogen		
0	S	
Headlamps – HID		
	S	
Fog lamps – Halogen		
0	0	S
Fog lamps – LED		
	0	0
Fog lamps – Adaptive cornering halogen (includes Front Parking Sensors)		
	S	
Body-color, power, heated sideview mirrors with power folding		
S		
Black, power, heated sideview mirrors with power folding		
0		
Black, power, heated sideview mirrors with manual folding <sup>1</sup>		
0	0	0
Daytime running lamps – Non-configurable		
0	0	0
Roof-rack side rails <sup>1</sup>		
0	0	0
Roof rack with crossbars <sup>1</sup>		
0	0	0
Splash guards (front)		

XL	XLT	TITANIUM
S	S	S
<b>FLOORING</b>		
Carpet (all rows)		
	S	S
Carpeted floor mats (1st and 2nd rows)		
0	0	
Vinyl (1st and 2nd rows) <sup>1</sup>		
0	0	
Vinyl (behind 2nd row) <sup>1</sup>		
0	0	0
Floor liners (1st and 2nd rows) <sup>1</sup>		
<b>PACKAGES</b>		
0	<b>CNG/Propane Gaseous Engine Prep Package</b> (requires 2.5L engine)	
0	<b>XLT Premium Package:</b> <sup>1</sup> heated leather-trimmed 1st- and 2nd-row seats, overhead aircraft-style mid-vehicle console, HID headlamps, 16" Dark Sparkle-painted aluminum wheels and SYNC 3 with Navigation System	
0	0	0
<b>Smoker's Package</b>		
0	0	0
<b>Trailer Tow Package:</b> <sup>1</sup> Class I trailer hitch receiver, trailer wiring module, 4-pin connector, and Trailer Sway Control		
<b>FLEET ONLY</b>		
0	Flooring – Carpet (all rows; requires 2nd-row bench seat)	
0	Speed limitation – 65-mph governed top speed (n/a with MyKey)	
0	Speed limitation – 75-mph governed top speed (n/a with MyKey)	
0	0	0
3rd-row seat delete <sup>1</sup>		
0	0	0
Ford Telematics™ (Ford data subscription)		

S: STANDARD  
O: OPTIONAL

Colors are representative only. See your dealer for actual paint/trim options.

**1.** Restrictions may apply. See your dealer for details. **2.** All SiriusXM services require a subscription, each sold separately by SiriusXM after the trial period. Service will automatically stop at the end of your trial unless a subscription is purchased. See the SiriusXM Customer Agreement at [www.siriusxm.com](http://www.siriusxm.com) for complete terms. Some services and features are subject to device capabilities and location availability. All fees, content and features are subject to change. **3.** XL Passenger Wagon only. **4.** Fleet only. **5.** Optional on XLT and included in the XLT Premium Package.

Horsepower and torque are independent attributes and may not be achieved simultaneously.

## WHEELS



16" Steel with Full Sparkle Silver-Painted Covers  
**XL, XLT Standard**<sup>1</sup>



16" Sparkle Silver-Painted Aluminum  
**XL, XLT, TITANIUM Optional**



16" Dark Sparkle-Painted Aluminum  
**XL, XLT, TITANIUM Optional**  
**XLT Premium Package Included**



16" Premium Dark Stainless-Painted Aluminum  
**TITANIUM Standard**<sup>1</sup>

## EXTERIOR & INTERIOR



**1** Agate Black Metallic



**3** Silver



**5** Solar Silver Metallic



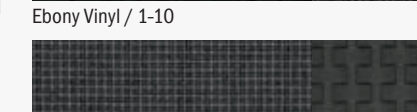
**7** Blue Metallic



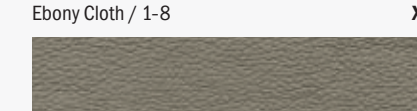
**9** Dark Blue<sup>3</sup>



Ebony Vinyl / 1-10



Ebony Cloth / 1-8



Palazzo Grey Leather<sup>5</sup> / 1-8



**2** Magnetic Metallic



**4** Frozen White



**6** Race Red



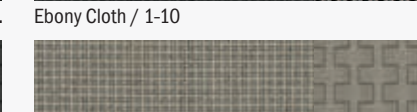
**8** Sedona Orange Metallic



**10** School Bus Yellow<sup>3,4</sup>



Ebony Cloth / 1-10



Palazzo Grey Cloth / 1-8

**XL, TITANIUM**

# CARGO VAN

XL	XLT
<b>S S</b>	<b>ENGINE &amp; TRANSMISSIONS</b>
<b>0 0</b>	<b>2.0L GDI I-4 engine</b> with Auto Start-Stop Technology, 8-speed SelectShift <sup>®</sup> automatic transmission, 162 hp @ 6,500 rpm and 144 lb.-ft. of torque @ 4,500 rpm
<b>0 0</b>	<b>2.5L IVCT I-4 engine</b> with 6-speed SelectShift automatic transmission, 60-amp-hr battery, 169 hp @ 6,000 rpm and 171 lb.-ft. of torque @ 4,500 rpm (requires CNG/Propane Gaseous Engine Prep Package)
<b>S S</b>	<b>MECHANICAL</b>
<b>0 0</b>	150-amp alternator
<b>0 0</b>	Engine block heater
<b>0 0</b>	Flex Fuel capability (FFV; requires 2.0L engine)
<b>0 0</b>	Heavy-duty alternator (220-amp; requires 2.0L engine)
<b>0 0</b>	Tire inflator and sealant kit (in place of the full-size spare)
<b>0 0</b>	Upfitter wiring harness (LWB)
<b>S S</b>	<b>FORD CO-PILOT360™ TECHNOLOGY</b>
<b>S S</b>	Pre-Collision Assist with Automatic Emergency Braking (AEB)
<b>S S</b>	Rear View Camera
<b>S S</b>	Auto High-Beam Headlamps
<b>S S</b>	Lane-Keeping Aid
<b>0 S</b>	BLIS <sup>®</sup> (Blind Spot Information System) with Cross-Traffic Alert (includes power, heated sideview mirrors with power folding) <sup>1</sup>
<b>0 0</b>	Rear Parking Sensors
<b>0 0</b>	Adaptive Cruise Control (includes Lane-Keeping System)
<b>0 0</b>	Front and Rear Parking Sensors
<b>S S</b>	<b>COMFORT &amp; CONVENIENCE</b>
<b>S S</b>	1st-row power windows with driver's one-touch-down feature
<b>S S</b>	1st-row power windows with one-touch-up/-down feature
<b>S S</b>	Day/night rearview mirror
<b>0 0</b>	Auto-dimming rearview mirror <sup>1</sup>
<b>S S</b>	Front floor console with 12V powerpoint and 2 cupholders
<b>S S</b>	Cargo tie-down hooks (4)
<b>S S</b>	Dual sliding side doors (no glass) and 180° swing-out rear cargo doors (no glass)
<b>S S</b>	Front dome light
<b>S S</b>	Manual front air conditioning and heater
<b>S S</b>	Rear cargo area light – Halogen

XL	XLT
<b>S S</b>	Compass display
<b>S S</b>	Dual front map lights
<b>S S</b>	Front floor console with closeable lid, 12V powerpoint and 2 cupholders
<b>S S</b>	Sun visor mirrors
<b>0 S</b>	Cruise control
<b>0 0</b>	2 additional key fobs <sup>1</sup>
<b>0 0</b>	2nd-row fixed-glass passenger-side window with steel-mesh window guard
<b>0 0</b>	2nd-row fixed-glass windows with steel-mesh window guards (requires fixed rear-door glass)
<b>0 0</b>	180° swing-out rear cargo doors with fixed glass and wipers
<b>0 0</b>	Composite bulkhead <sup>2</sup>
<b>0 0</b>	Composite bulkhead with window <sup>2</sup>
<b>0 0</b>	Privacy glass (excludes front row)
<b>0 0</b>	Quickclear™ electric windshield defroster; plus power, heated sideview mirrors <sup>1</sup>
<b>0 0</b>	Rear cargo area light – LED
<b>0 0</b>	Rear liftgate with fixed glass and wiper
<b>0 0</b>	Rear-window defroster
<b>0 0</b>	Dual-zone electronic automatic temperature control
<b>0 0</b>	Remote Start System (includes perimeter alarm)
<b>S S</b>	<b>SEATING</b>
<b>S S</b>	6-way manual driver seat and 4-way manual front-passenger seat with fold-flat back
<b>S S</b>	Vinyl-trimmed seating surfaces
<b>0 S</b>	Cloth-trimmed seating surfaces
<b>0 S</b>	Driver's seat with manual lumbar

XL	XLT
<b>0 S</b>	<b>CONNECTIVITY &amp; ENTERTAINMENT</b>
<b>0 0</b>	SYNC <sup>®</sup> 3 with 6.5" LCD capacitive touchscreen, 911 Assist <sup>®</sup> , AppLink <sup>®</sup> , Apple CarPlay <sup>®</sup> compatibility, Android Auto™ compatibility, 2 smart-charging USB ports, and SiriusXM <sup>®</sup> with 3-month All Access trial subscription <sup>3</sup>
<b>0 0</b>	SYNC 3 includes equipment above plus Voice-Activated Touchscreen Navigation System (includes SiriusXM Traffic and Travel Link <sup>®</sup> with 5-year subscription <sup>3</sup> )
<b>S S</b>	AM/FM stereo with Bluetooth <sup>®</sup> capability, 4.2" LCD screen, 1 USB port and 4 speakers
<b>S S</b>	12V powerpoints (2: 1 front floor console, 1 rear cargo area)
<b>0 S</b>	Wireless charging pad <sup>1</sup>
<b>0 0</b>	Single-CD player <sup>1</sup>
<b>0 S</b>	<b>SAFETY &amp; SECURITY</b>
<b>0 S</b>	MyKey <sup>®</sup> technology to help encourage responsible driving <sup>1</sup>
<b>0 0</b>	Perimeter alarm <sup>1</sup>
<b>S S</b>	<b>APPEARANCE</b>
<b>S S</b>	3-bar black grille and surround with black bumpers and rear bumper end caps; black headlamp bezels; black bodyside moldings and door handles; and black manual sideview mirrors with manual folding
<b>S S</b>	3-bar black grille and surround; body-color front bumper and rear bumper end caps; black headlamp bezels; black bodyside moldings and door handles; black, power, heated sideview mirrors with power folding; and halogen fog lamps
<b>S S</b>	Headlamps – Halogen
<b>0 0</b>	Black, power, heated sideview mirrors with manual folding <sup>1</sup>
<b>0 0</b>	Large, power, heated sideview mirrors with manual folding (recommended for towing)
<b>0 0</b>	Body-color bodyside moldings; wide
<b>0 0</b>	Fog lamps – Adaptive cornering halogen
<b>0 0</b>	Fog lamps – LED
<b>0 0</b>	Headlamps – HID
<b>0 0</b>	Daytime running lamps – Non-configurable
<b>0 0</b>	Roof-rack side rails
<b>0 0</b>	Roof rack with crossbars
<b>0 0</b>	Splash guards (front)

XL	XLT
<b>S S</b>	<b>FLOORING</b>
<b>S S</b>	Vinyl (front and rear)
<b>S S</b>	Carpet and carpeted floor mats (front)
<b>0 0</b>	Floor liners (front)
<b>0 0</b>	Vinyl (front) <sup>1</sup>
<b>0 0</b>	<b>PACKAGES</b>
<b>0 0</b>	<b>CNG/Propane Gaseous Engine Prep Package</b> (requires 2.5L engine)
<b>0 0</b>	<b>Smoker's Package</b>
<b>0 0</b>	<b>Trailer Tow Package:</b> Class I trailer hitch receiver, trailer wiring module, 4-pin connector, and Trailer Sway Control
<b>0 0</b>	<b>FLEET ONLY</b>
<b>0 0</b>	Ford Telematics™ (Ford data subscription)
<b>0 0</b>	Speed limitation – 65-mph governed top speed (n/a with MyKey)
<b>0 0</b>	Speed limitation – 75-mph governed top speed (n/a with MyKey)

**S:** STANDARD  
**O:** OPTIONAL

## WHEELS



16" Steel with Full Sparkle Silver-Painted Covers  
**XL, XLT** Standard



16" Shadow Silver-Painted Styled Steel  
**XL** Optional



16" Dark Sparkle-Painted Aluminum  
**XL, XLT** Optional

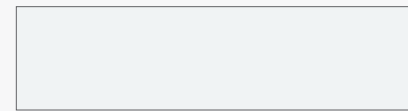


16" Sparkle Silver-Painted Aluminum  
**XLT** Optional

## EXTERIOR & INTERIOR



**1** Agate Black Metallic



**3** Frozen White



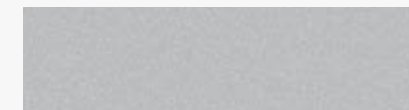
**5** Dark Blue<sup>4</sup>



Ebony Vinyl / 1-5



Ebony Cloth / 1-4



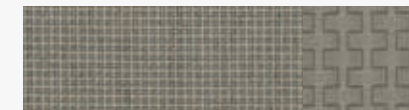
**2** Silver



**4** Race Red



Ebony Cloth / 1-5



Palazzo Grey Cloth / 1-4

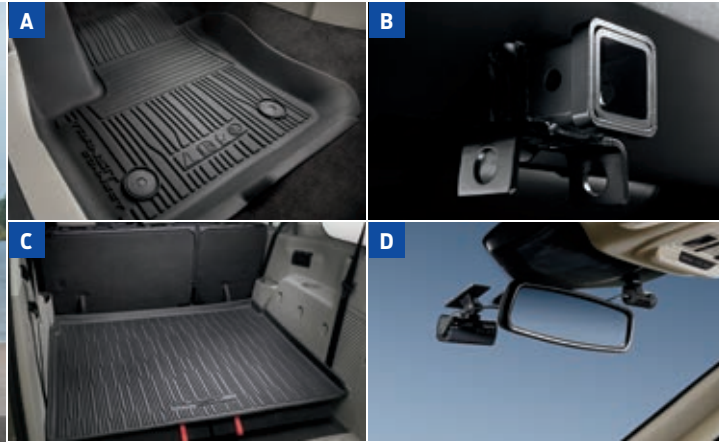
Colors are representative only. See your dealer for actual paint/trim options.

**1.** Restrictions may apply. See your dealer for details. **2.** Ford Licensed Accessory. **3.** All SiriusXM services require a subscription, each sold separately by SiriusXM after the trial period. Service will automatically stop at the end of your trial unless a subscription is purchased. See the SiriusXM Customer Agreement at [www.siriusxm.com](http://www.siriusxm.com) for complete terms. Some services and features are subject to device capabilities and location availability. All fees, content and features are subject to change. **4.** XL Cargo Van only.

Horsepower and torque are independent attributes and may not be achieved simultaneously.



PASSENGER WAGON XLT LWB in Silver accessorized with keyless entry keypad, Remote Start System, side window deflectors,<sup>1</sup> molded splash guards, and roof crossbars and cargo box<sup>1,2</sup>



SHOP THE COMPLETE COLLECTION | [accessories.ford.com](https://accessories.ford.com)

- A. Floor liners
- B. Trailer hitch
- C. Cargo area protector
- D. Dash cam systems<sup>1</sup>

**Ford Credit®** Get the ride you want. Whether you plan to lease or buy, Ford Credit has the option that's right for you. Ask your Ford Dealer for details or visit us online at [ford.com/finance](https://ford.com/finance).

**Ford Insure.** Insurance that lets you earn discounts for safe driving, offering a maximum discount of 40% off your auto insurance. Ford Insure works with your 2022 Transit Connect® to gauge driving habits and calculate a discount based on how you drive. Visit [fordinsure.com](https://fordinsure.com) to learn more.

*American Road Services Company LLC (a Ford affiliate) is the licensed insurance agency offering Ford Insure and is underwritten by Nationwide Mutual Insurance Company and affiliates. Home Office: Columbus, OH. Ford Motor and Ford Credit are not insurance companies or agents. Subject to underwriting guidelines, review and approval. Details and availability varies; program criteria differ in California. Discounts do not apply to all coverage elements; actual savings vary by state, coverage selections, rating factors and policy changes.*

**Ford Licensed Accessories (FLA)** are warranted by the accessory manufacturer's warranty. FLA are designed and developed by the accessory manufacturer and have not been designed or tested to Ford Motor Company engineering requirements. Contact your Ford Dealer for details and/or a copy of all limited warranties.

**Ford Original Accessories.** They're warranted for whichever provides you the greatest benefit: 24 months/unlimited mileage, or the remainder of your Bumper-to-Bumper 3-year/36,000-mile (whichever comes first) New Vehicle Limited Warranty.

**Ford Protect™ Extended Service Plans.** Whether you purchase or lease your Ford vehicle, insist on genuine Ford Protect extended service plans. Ford Protect has a variety of plans to give you peace-of-mind protection whether you want vehicle component or maintenance coverage. Plus, they are fully backed by Ford and honored at all Ford dealerships in the U.S., Canada and Mexico. When you visit your dealer, insist on genuine Ford Protect extended service plans.

**New Vehicle Limited Warranty.** We want your Ford Transit Connect ownership experience to be the best it can be. Under this warranty, your new vehicle comes with 3-year/36,000-mile bumper-to-bumper coverage (whichever comes first), 5-year/60,000-mile Powertrain Warranty coverage (whichever comes first), 5-year/60,000-mile safety restraint coverage (whichever comes first), and 5-year/unlimited-mile corrosion perforation (aluminum panels do not require perforation) coverage (whichever comes first) – all with no deductible. Please ask your Ford Dealer for a copy of this limited warranty.

**Roadside Assistance.** Covers your vehicle for 5 years or 60,000 miles (whichever comes first), so you have the security of knowing that help may be only a phone call away should you run out of fuel, lock yourself out of the vehicle or need a winch back to a paved road, a battery jump start or towing. Your Ford Dealer can provide complete details on all of these advantages.

# INCREASE YOUR PRODUCTIVITY.

**FORD TELEMATICS™ ESSENTIALS<sup>3,4</sup>** is our complimentary software solution that has an intuitive, easy-to-read dashboard providing valuable insights about your fleet vehicles.

- Vehicle Health data such as odometer readings, Diagnostic Trouble Codes (DTCs), oil life, engine hours and recalls
- Remote lock/unlock capability<sup>5</sup> (available fall 2021)
- Software Updates Manager helps you maximize uptime (available early 2022)

To take advantage of this complimentary offer, sign up today at [fleetaccount.ford.com/customer-signup](https://fleetaccount.ford.com/customer-signup).

**AVAILABLE FORD TELEMATICS** Fleet Management Software<sup>4,6</sup> lets you monitor where your vehicles go, how they're used, how well they're running and more. These insights can give you more time to focus on the rest of your business. Or use available Ford Data Services™<sup>4,6</sup> to access data through your business system or other telematics service providers. We can help you get the data you need the way you prefer. Learn more at [commercialsolutions.ford.com](https://commercialsolutions.ford.com).



Driver behavior insights help identify coaching opportunities that may reduce waste or improve driving practices.



Vehicle fuel monitoring can help you identify ways to reduce waste and improve efficiencies.



Live GPS tracking and geofencing capabilities can help you keep track of the vehicles in your fleet.

**1.** Ford Licensed Accessory. **2.** Consult owner's manual for details on roof-rack load limits. **3.** Available on Ford vehicles with embedded modem. Requires modem activation and agreement to digital terms and conditions. Complimentary access will exist for the life of the vehicle or the life of the product. **4.** Connected service and features, and access to vehicle data depend on subscription and compatible AT&T network availability. Evolving technology/cellular networks/vehicle capability may limit functionality and prevent operation of connected features. **5.** Remote lock/unlock requires power door locks. **6.** Available on vehicles with embedded modem or equipped with plug-in device (PID). Requires modem activation. Ford Telematics and Ford Data Services are subscription services subject to agreement to FSM terms and conditions. Subscription subject to monthly charge. Subject to OFAC and credit check for subscription eligibility.

Ford and Oval Device, 911 Assist, AdvanceTrac, AppLink, BLIS, Built Ford Proud, Built Ford Tough, Easy Fuel, Ford Co-Pilot360, Ford Credit, Ford Data Services, Ford Protect, Ford Telematics, FordPass, FordPass. Built to Keep You Moving., MyKey, QuickClear, Roll Stability Control, RSC, Safety Canopy, SecurILock, SelectShift, SYNC, Transit Connect, Vista Roof and related marks are trademarks of Ford Motor Company.

Apple CarPlay is a trademark of Apple Inc., registered in the U.S. and other countries. Android Auto is a trademark of Google LLC. HD Radio is a proprietary trademark of iBiquity Digital Corporation. SiriusXM and all related marks and logos are trademarks of Sirius XM Radio Inc. The Bluetooth word mark is a trademark of the Bluetooth SIG, Inc.

Comparisons based on competitive models (class is Small Vans), publicly available information and Ford certification data at time of release. Vehicles may be shown with optional and aftermarket equipment. Features may be offered only in combination with other options or subject to additional ordering requirements/limitations. Dimensions and capacity ratings shown may vary due to optional features and/or production variability. Information is provided on an "as is" basis and could include technical, typographical or other errors. Ford makes no warranties, representations, or guarantees of any kind, express or implied, including but not limited to, accuracy, currency, or completeness, the operation of the information, materials, content, availability, and products. Ford reserves the right to change product specifications, pricing and equipment at any time without incurring obligations. Your Ford Dealer is the best source of the most up-to-date information on Ford vehicles.



[ford.com/transitconnect](https://ford.com/transitconnect)

## EPA-ESTIMATED RATINGS

Actual mileage will vary.

### 2.0L GDI I-4

PW

24 CITY MPG  
28 HWY MPG  
26 COMB MPG

CV

24 CITY MPG  
27 HWY MPG  
25 COMB MPG

### 2.5L iVCT I-4

PW

20 CITY MPG  
26 HWY MPG  
22 COMB MPG

CV

20 CITY MPG  
26 HWY MPG  
22 COMB MPG

PW = PASSENGER WAGON  
CV = CARGO VAN



From day one, we had the future in mind. And over 118 years later, we continue that tradition of innovation. Ford Co-Pilot360™ Technology is helping push us closer to autonomous driving. The latest generation of voice-activated SYNC® fosters untethered communication. And our fully electric vehicles – the all-new 2022 Ford F-150 Lightning® pickup and the Mustang Mach-E® SUV – are charging across America.

We've always had our mind on the future. Now we're building it.

22TCNPDF

©2021 Ford Motor Company



## FordPass. Built to Keep You Moving.™

Meet FordPass™ The app that lets you access complimentary remote features including start/stop and lock/unlock, monitor your fuel level and oil life,<sup>1</sup> and puts Rewards, Roadside Assistance<sup>2</sup> and more in the palm of your hand.



SCAN TO DOWNLOAD  
or visit [FordPass.com](https://fordpass.com)  
*Data rates may apply.*

**1.** FordPass Connect, the FordPass App, and complimentary Connected Service are required for remote features (see FordPass Terms for details). Connected service and features depend on compatible AT&T network availability. Evolving technology/cellular networks/vehicle capability may limit functionality and prevent operation of connected features. Connected service excludes Wi-Fi hotspot. **2.** Roadside Assistance is included for certain owners and available to everyone for a per-service fee. Ford reserves the right to change program details without obligations. Ford Roadside Assistance is a complimentary offering to all Ford owners for up to 5 years or 60,000 miles (from the date of sale), whichever comes first.

